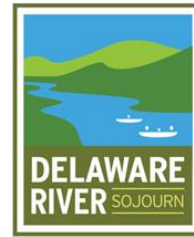


Daily Plan – Day 3

Monday, June 22, 2026

Day Coordinators:

Kerry Engelhardt – Upper Delaware Council
Lydia Freethy – Delaware Highlands Conservancy
Jess Yoder – Pike County Planning



Stretch to be Paddled:

Pond Eddy Silver Canoes (RM 266) to Airport Park, Matamoras, PA (RM 253)
13 miles through class I & II Rapids

Evening Camping: Worthington State Forest Campsite, Old Mine Rd, Columbia NJ 07832

Campers: Break camp at Ten Mile River Camp Keowa & drive to Airport Park

Arriving Today? Travel to Airport Park

701 Avenue Q, Matamoras, PA 18336 – see directions on page 2

- 7:00 a.m. Break Camp at Camp Keowa. Campers drive themselves & gear to Airport Park (~45 min)
- 7:45 a.m. **Arriving today with a boat?** Drop off with NEWE livery first, then register and have breakfast
- 7:45 a.m. Breakfast and registration **for all Sojourners** at Airport Park. **Everyone must register each morning.** Cars will be parked here for the day.
- 8:30 a.m. Livery with boats and NCSP safeties depart for launch location
- 9:00 a.m. Sojourn Welcome
- 9:15 a.m. **Buses arrive and leave Airport Park ASAP** to head for Pond Eddy
- 9:45 a.m. Safety Talk at Pond Eddy with National Canoe Safety Patrol
- 10:15 a.m. Optional paddling instruction at Pond Eddy for new paddlers with National Canoe Safety Patrol.
- 10:30 a.m. Begin launch at Pond Eddy (RM 266) (8 miles to lunch)
- 1:30 p.m. Lunch at Sparrowbush, NY Access (RM 258)
- 2:30 p.m. Begin launch after lunch (5 miles to takeout)
- 4:00 p.m. Take-out at Airport Park (RM 253)
- 5:00 p.m. Sojourners drive on their own to Worthington State Forest. **See directions & map on pages 3-4.**
Sojourners are responsible for their own dinner.
- 5:45 p.m. Begin setting up camp at Worthington State Forest
- 10:30 p.m. Quiet Hours in camp

Note: If bringing your own boat, please make sure it has up-to-date registration and/or current launch permits.

Evening Camping Info: There are full shower and bathroom facilities at [Worthington State Forest](#). Portable restrooms also provided. Sojourners will follow all Worthington State Forest rules, including no alcohol permitted.

EMERGENCY CONTACT NUMBERS:

National Park Service Dispatch: 1-570-426-2457

9-1-1

Many Thanks to Today's Sojourn Partners:

Delaware River Sojourn Steering Committee, Upper Delaware Preservation Coalition, National Canoe Safety Patrol, Scouting America, Borough of Matamoras, Delaware Highlands Conservancy, Northeast Wilderness Experience, NPS Upper Delaware Scenic & Recreational River, Upper Delaware Council, Pike County Planning and Mapping, NYS Dept. of Environmental Conservation, Konrad's Kitchen, We Transport, State of New Jersey, Dept. of Environmental Protection, Division of Parks and Forestry and Worthington State Forest

Special Thanks to Sojourn Donors and Grantors:

Pennsylvania Organization of Watersheds and Rivers (POWR), ShopRite, NPS Lower Delaware Wild and Scenic River and PPL

CAMPERS--

**Directions to Airport Park (701 Avenue Q, Matamoras, PA 18336) from Camp Keowa:
(~45-minute drive)**

- Take Keowa Road northeast.
- Turn left onto Crystal Lake Road (County Route 26). Drive approximately 1.9 miles.
- Turn right onto State Route 55 west. Drive south approximately 11.2 miles.
- Turn left onto State Route 97 south. Drive approximately 18.3 miles.
- Turn right onto US 6 West/US South 209 (Pike Street), 0.6 mi.
- Continue on US 6/209 (Pennsylvania Ave), 0.5 mi.
- Turn left onto 7th Street. Continue to T-intersection.
- Turn right onto Avenue S.
- Make the next left onto 9th Street Ex. Drive to end for parking.

ARRIVING TODAY?

Head to Airport Park (701 Avenue Q, Matamoras, PA 18336)

- [Click here for a link to make your own directions to Airport Park](#)

DRIVING DIRECTIONS FROM AIRPORT PARK TO WORTHINGTON STATE FOREST

**701 Avenue Q, Matamoras, PA to Worthington State Forest Campsite, Campground Rd., Columbia, NJ 07832
(~1 hr 15 minutes)**

- [Click here for a link to Google Maps for directions from Airport Park](#)
- [Click here for a link to get general directions to Worthington State Forest](#)

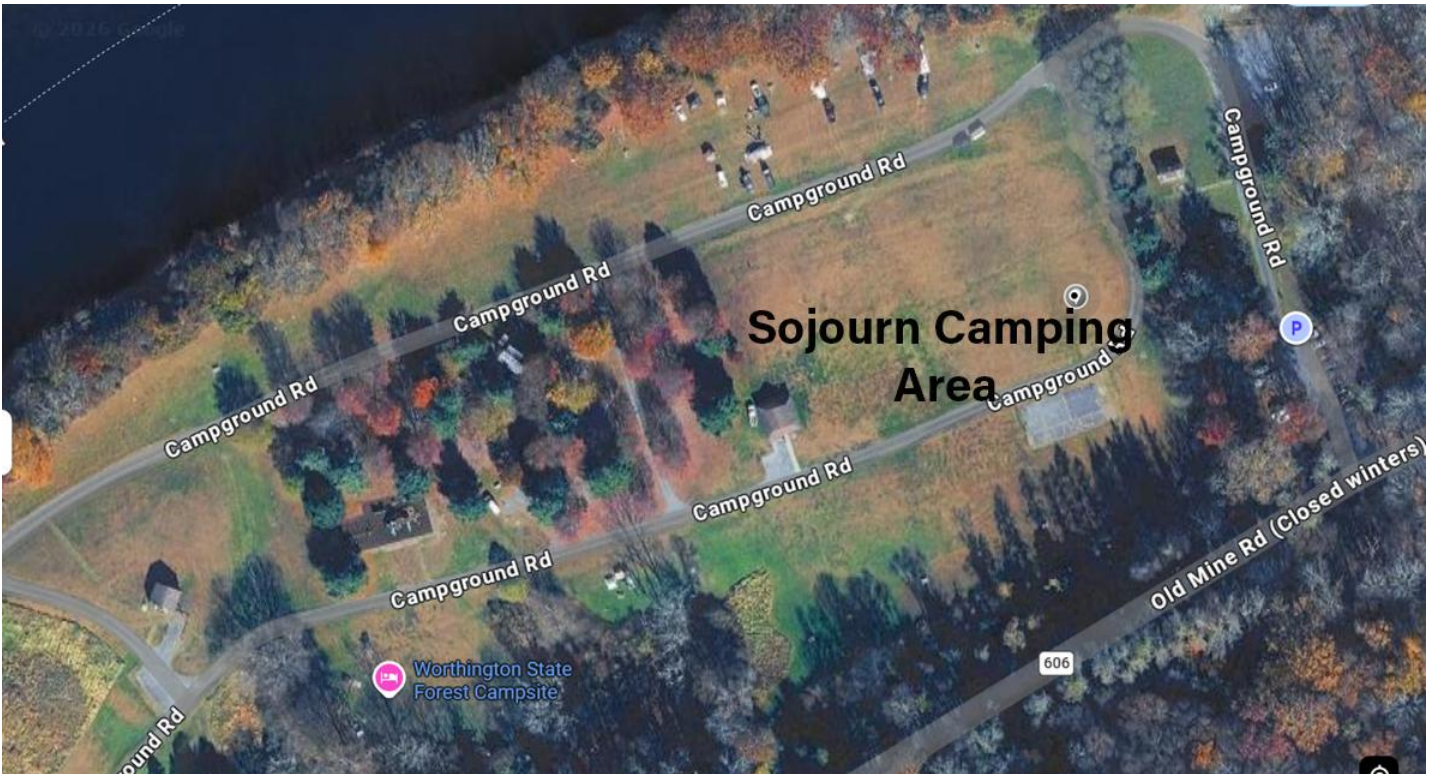
The Worthington Forest State Park Group camping area is located off of Old Mine Road in Warren County, NJ. Enter at second gate entrance, look for Delaware River Sojourn signs. GPS: 40 degrees 58'36.01" N & 75 degrees 8'4.68" W

Driving Directions

Start: Airport Park, Matamoras, PA

- Head toward Avenue Q
- Take 7th Street towards Rt. 209 (0.3 mi)
- Turn left onto US-209 S/US-6 W/Pennsylvania Ave
- Continue to follow US-209 S/US-6 W (6.2 mi)
- Turn left onto E Harford St (0.4 mi)
- Slight right onto US-206/US-209/Federal Rd (0.2 mi)
- Slight right onto US-206/US-209 S (24.2 mi)
- Slight left onto Hollow Rd/T461 (4.1 mi)
- Turn right onto River Rd (2.5 mi)
- At the traffic circle, take the 3rd exit onto Broad St (0.2 mi)
- Use the right lane to merge onto I-80 E via the ramp & take I-80 E, entering New Jersey (1.6 mi)
- Take the River Road exit
- Sharp right onto River Rd (1.1 mi)
- Continue onto Old Mine Rd (3.2 mi)
- Turn left onto Campground Rd
- Turn left to stay on Campground Rd

End: Worthington State Forest Campsite, Columbia, NJ



Worthington State Forest Campground Map



EMERGENCY CONTACT NUMBERS:
National Park Service Dispatch: 1-570-426-2457
9-1-1